

PRINT ON DEMAND:

All images in this catalogue are available for Print on Demand. Order any image up to 51" on canvas, fine art paper or quality poster paper.

Our extensive online catalogue is the perfect way to look for art. Start by browsing our website collections and narrow your search by artist, keyword, or subject or size.

You can even create your own PDF Portfolios and send them to our sales team as an inquiry.

Visit www.wildapple.com.



www.facebook.com/buyart.wildapple



www.instagram.com/wildappleart/



www.linkedin.com/company/wild-apple-graphics



www.pinterest.com/wildappleart/



twitter.com/wildappletweet

WILD  APPLE





Sturdy and strong, the iconic barn is a symbol of resilience and strength. Our artists are creating painterly fine art and minimalistic celebrations of these celebrated structures for wall decor collections worldwide.

barns: a love story



TREND BOARD: BARNs: A LOVE STORY

designed by: WILD APPLE GRAPHICS





modern farm

Rooted in rustic country charm and influenced by minimalistic Scandinavian design, today's modern farmhouse look is ever evolving. With an emphasis on casual living and comfort, this look calls for art that celebrates life on the farm but with a new modern twist.

A: 70681 LITTLE WHITE BARN
PAMELA MUNGER

B: 71963 CINNAMON RIVERBANK II | C: 71962 CINNAMON RIVERBANK I
SILVIA VASSILEVA

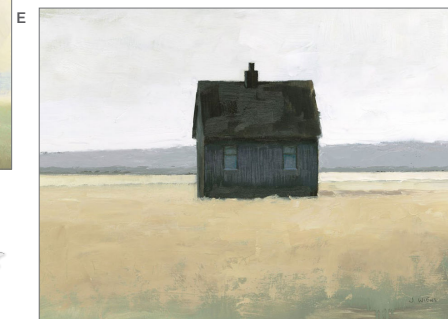


ART DECOR



A: 74105 HOMEWARD II | B: 74104 HOMEWARD I
C: 74102 RURAL SIMPLICITY III | D: 74101 RURAL SIMPLICITY II
COURTNEY PRAHL





A: 75171 CLOUDY SKIES
C: 75177 TRANQUIL SCENE
D: 70059 LONELY LANDSCAPE I
E: 70075 LONELY LANDSCAPE II
JAMES WIENS

B: 74755 THE OLD FARM LANDSCAPE CROP
SILVIA VASSILEVA



A



A: 71699 DUSK ON MESA
PAMELA MUNGER

B: 74318 SUNFLOWER FIELD
SILVIA VASSILEVA

B

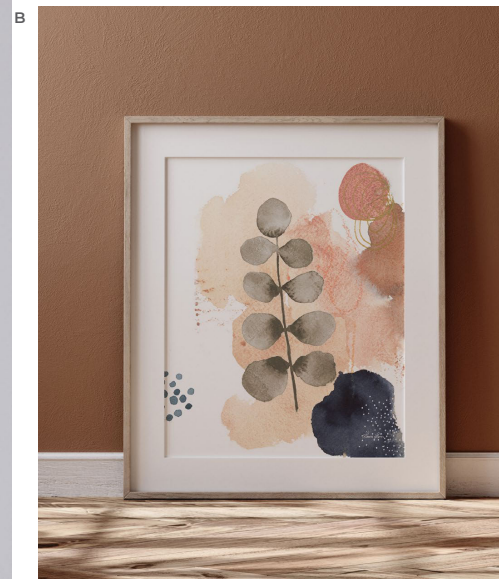


natural selection

Botanical prints are taking interiors by storm and we know why. At the heart of this trend is our desire to surround ourselves in the healing magic of nature. This season we're seeing soft and airy color stories of blush, coffee, sage and cream combined in abstract-inspired pieces as well as elegant simple pen and ink drawings for the wall.

A: 74586 NATURE BLISS I
B: 74587 NATURE BLISS II
C: 74588 NATURE BLISS III
LAURA HORN





#BUYART

A: 70893 FARM NOSTALGIA
FLOWERS VII DARK GRAY
DANHUI NAI

B: 74581 SERENE NATURE II
C: 74580 SERENE NATURE I
LAURA HORN





70891 FARM NOSTALGIA FLOWERS IV DARK GRAY
DANHUI NAI



70892 FARM NOSTALGIA FLOWERS V DARK GRAY
DANHUI NAI



70889 FARM NOSTALGIA FLOWERS I DARK GRAY
DANHUI NAI



70890 FARM NOSTALGIA FLOWERS II DARK GRAY
DANHUI NAI



A: 74369 POPPY II | B: 74365 CHRYSANTHEMUM II | C: 74364 CHRYSANTHEMUM I | D: 74368 POPPY I
CHRIS PASCHKE

A



mountains & meadows

Let's go climb a mountain. Ok - maybe we can't just now but we are in love with magnificent and dramatic photography collections of wide open spaces featuring mountains and meadows. This collection is soft and ethereal and looks amazing printed large, small or grouped into gallery walls.

A: 69903 ABOVE SKOGAFOSS
B: 69905 REYKJADALUR HOT RIVER
LAURA MARSHALL



B

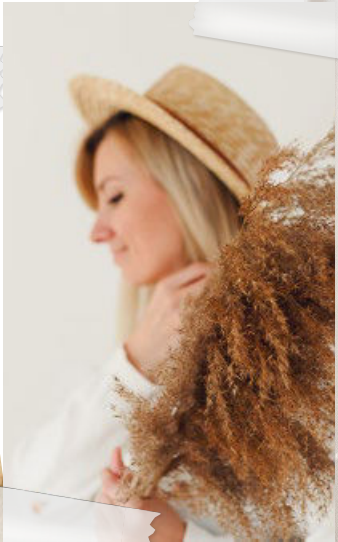




A: 71623 FIELDS OF GOLD | B: 71621 TEXAS WILD | C: 71625 FLOWER POWER
NATHAN LARSON



ART DECOR



A: 71624 FIELD FRIENDS FADE | B: 71626 FIELD TRIP
NATHAN LARSON



A



A: 69906 SELID TURF HOUSES
LAURA MARSHALL



71680 STANLEY LAKE IDAHO
ALAN MAJCHROWICZ

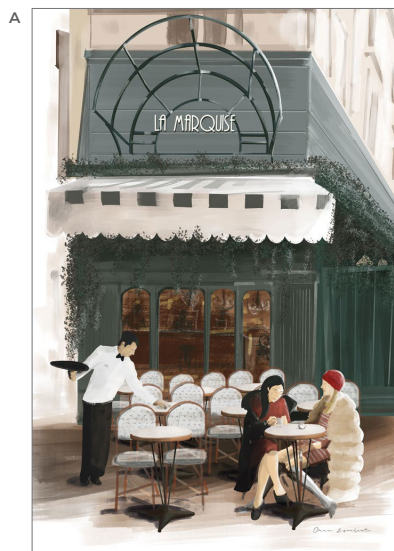


69904 MOUNTAIN GRADIENT
LAURA MARSHALL

travel plans

Where are we going? You decide.

Almost all of us had our travel plans put on hold this last year and while the world isn't back to 100% normal, we are all still dreaming of the magical places we want to visit. From Parisian cafes, to Venice's canals and New York's skylines, you can travel any time just by looking at your walls.



A: 71213 PARIS BISTRO | B: 71212 MONMARTRE PARIS
C: 71214 VENICE MOMENT
OMAR ESCALANTE



C





70886 CHRYSLER BUILDING SKETCH
ANNE TAVOLETTI



70887 EIFFEL TOWER SKETCH
ANNE TAVOLETTI



70885 CAFE SKETCH II
ANNE TAVOLETTI



70884 CAFE SKETCH I
ANNE TAVOLETTI



A: 70958 CITY SKETCH II | B: 70957 CITY SKETCH I
AVERY TILLMON



A: 72836 VINTAGE PARIS I | D: 72837 VINTAGE PARIS II
WILD APPLE PORTFOLIO

B: 16673 BLUEPRINT MAP PARIS GREY
SUE SCHLABACH

C: 71188 A BIRDS VIEW OF PARIS CROP I
NATHAN LARSON

E: 36872 WATERCOLOR WANDERLUST PARIS ADVENTURE
LAURA MARSHALL

explore more art

OMAR ESCALANTE



74771 STYLE AND ATTITUDE III

#BUYART

OMAR ESCALANTE



74769 STYLE AND ATTITUDE I



74770 STYLE AND ATTITUDE II



74772 STYLE AND ATTITUDE IV



**omar
escalante**

Omar Escalante's art style is influenced by pop art and Art Deco style. "I like to tell stories through my illustrations," he says "Especially when I travel, I like to look for the feeling of places and show it through my work." When he began to create artwork based on vintage travel posters, the theme became his passion. In 2017 he won a travel poster contest promoting travel to Finland, where he lives with family. Omar grew up in Guatemala and has lived in Finland since 2007. His multicultural family (where five different languages might be spoken on any given day) also inspires and influences him in making his art.

SEE MORE ART



MERCEDES LOPEZ CHARRO



74423 PARIS GIRLFRIENDS V



74420 PARIS GIRLFRIENDS II



74422 PARIS GIRLFRIENDS IV

MERCEDES LOPEZ CHARRO



B I S O U S

MercedesLopezCharro

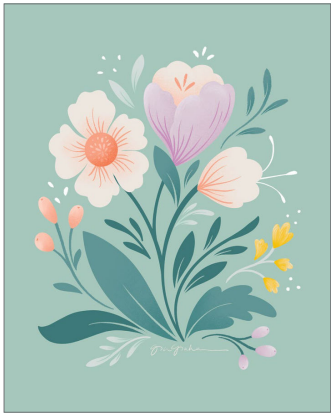
74419 PARIS GIRLFRIEND I



73254 SWEET RACCOON
FARIDA ZAMAN



73727 FLOWER FIELD II
GIA GRAHAM



73726 FLOWER FIELD I
GIA GRAHAM



73253 SWEET RABBIT
FARIDA ZAMAN

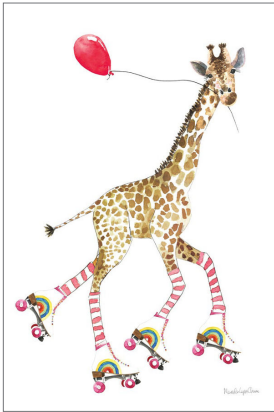


73937 FRESH BOUQUET

FARIDA ZAMAN



73183 GIRAFFE JOY RIDE III



73182 GIRAFFE JOY RIDE II



73181 GIRAFFE JOY RIDE I

MERCEDES LOPEZ CHARRO

KATRINA PETE



74773 MONARCHS AND BLOOMS



74774 PEONY DELIGHTS

DANHUI NAI



73196 HUMMINGBIRD SPRING I



73197 HUMMINGBIRD SPRING II

JEANETTE VERTENTES



74831 CONFETTI

JEANETTE VERTENTES



74812 GINGER PARTY

JEANETTE VERTENTES



74833 FALL FESTIVE

ART DECOR

DANHUI NAI



73240 SIMPLE AGAPANTHUS

DANHUI NAI



73190 RUGOSA ROSES

A: 73236 AIRY BLOOMS I
B: 73237 AIRY BLOOMS II
DANHUI NAI



**danhui
nai**

Danhui Nai was born in mainland China and raised in an artistic household with her sculptor father and painter mother. Her natural passion for art was guided through classical training which she applies in her California studio to create beautiful, on-trend artwork in a variety of media. She studied interior design later in Paris and New York City. She worked in the textile industry in Manhattan, where she continued her studies and artistic development.

SEE MORE ART

A



B



ART DECOR



74187 LUSH ROSES I BLUE



74188 LUSH ROSES II BLUE

DANHUI NAI



A: 70649 BLUE NEUTRALS I | B: 70650 BLUE NEUTRALS II
CHRIS PASCHKE

JENAYA JACKSON



74984 WASH DRY FOLD REPEAT V



74980 WASH DRY FOLD REPEAT I



74981 WASH DRY FOLD REPEAT II

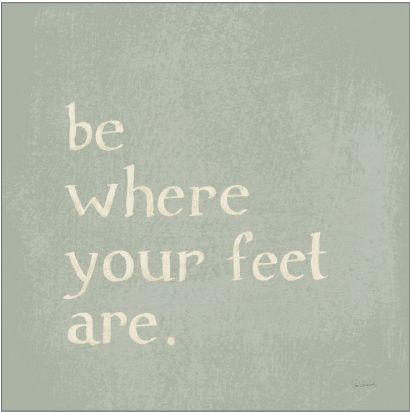


74982 WASH DRY FOLD REPEAT III



74983 WASH DRY FOLD REPEAT IV

SUE SCHLABACH



70646 BE WHERE YOUR FEET ARE



70645 LET LOVE IN

WILD APPLE PORTFOLIO



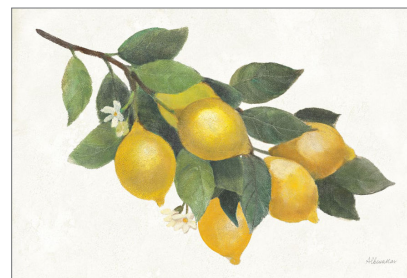
69828 FRESH AS A DAISY II



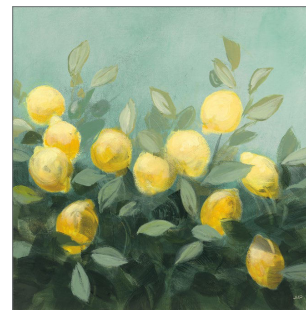
69827 FRESH AS A DAISY I



A: 74575 NATURES GOLD I | B: 74576 NATURES GOLD II
LAURA HORN



72451 LEMON BRANCH I
ALBENA HRISTOVA



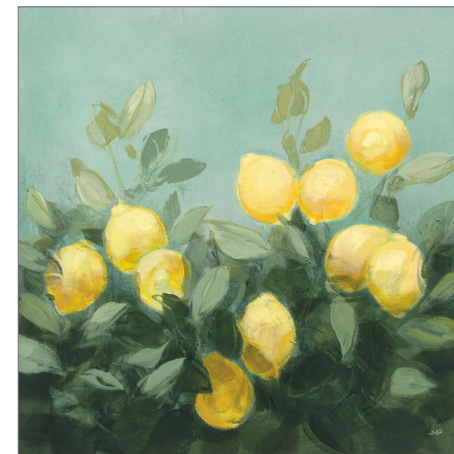
72076 LEMON GROVE II
JULIA PURINTON



72452 LEMON BRANCH II
ALBENA HRISTOVA



72453 LEMON BRANCH III
ALBENA HRISTOVA



72075 LEMON GROVE I
JULIA PURINTON

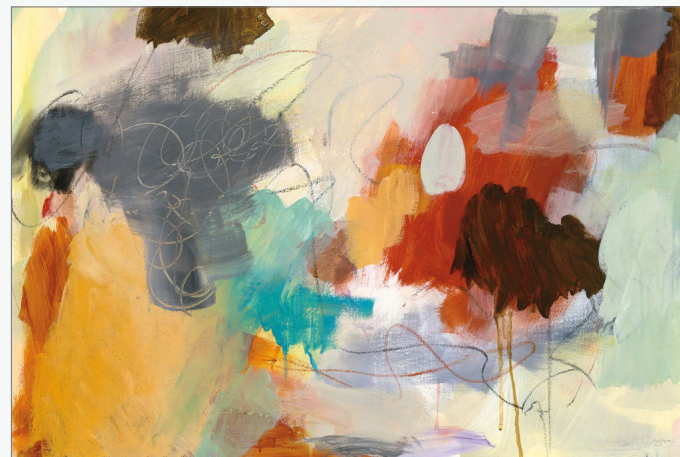




72021 THE SEA IS CALLING
DANHUI NAI

#BUYART

MARY URBAN



59501 HARDY I

CHRIS PASCHKE



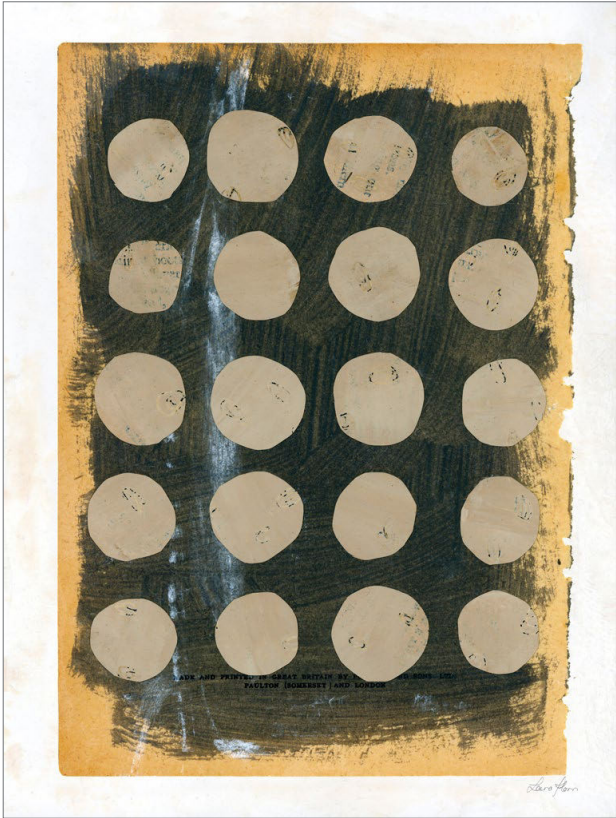
70661 HAKE NEUTRAL I



70662 HAKE NEUTRAL II



LAURA HORN



73167 NEUTRAL COLLAGE I

72016 SOUTHERN UTE PAMELA MUNGER



CHRIS PASCHKE



72064 END OF DAY IV



72063 END OF DAY III

CHRIS PASCHKE

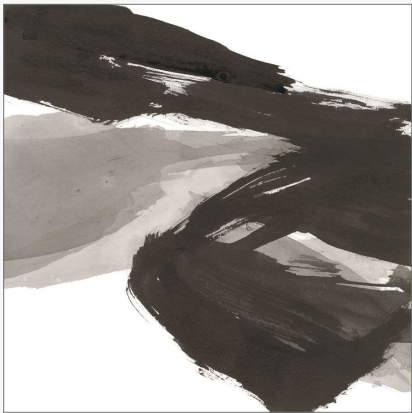


71883 TINTEDSCAPE III



71884 TINTEDSCAPE IV

CHRIS PASCHKE



71865 CHAOS I



71867 CHAOS III

NATHAN LARSON



72026 KING I



72027 KING II

NATHAN LARSON



72747 BULL SET BW CROP

DEBRA VAN SWEARINGEN

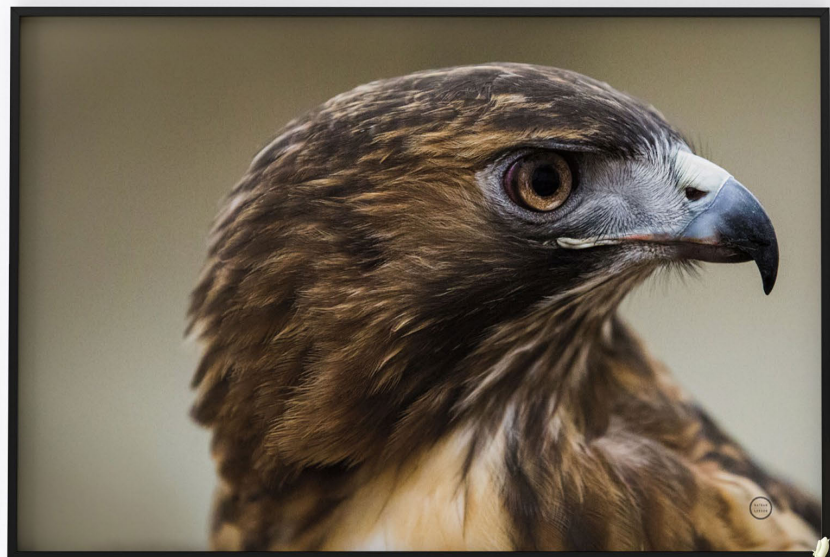


61436 PRETTY GIRL



73713 THREE KINGS
NATHAN LARSON





71174 RED TAILED HAWK PROFILE
NATHAN LARSON



**nathan
larson**

Nathan Larson is a Vermont-based photographer and chocolate consumer. For over 20 years he has created work that ranges from fine art photography to landscapes, abstracts, wildlife, and mixed media. He enjoys collaborating with clients to produce the perfect images for their projects and believes the world is a better place with more art in it.

"I still use my first camera, though I have added some tools along the way, and I'm still seeking new ways to share visual stories with my audience."

SEE MORE ART

NATHAN LARSON



74414 STILL A LIFE



ELIZABETH URQUHART



72483 OASIS DAY HIKE III CROP

NATHAN LARSON



72032 DUSTY DESERT SAGUARO

NATHAN LARSON



71173 ATLANTIC COAST AFTERNOON

NATHAN LARSON



71377 LONE BIRD OCEAN VIEW

SUE SCHLABACH



72426 FOGGY LIGHTHOUSE



72424 CASCO BAY LIGHTHOUSE I

PAMELA MUNGER



72017 SPRING TIDE

JEANETTE VERTENTES



75010 CLAMBAKE CLUSTER

DANHUI NAI



72633 MORNING DREAM

SILVIA VASSILEVA



74317 SUMMER CLOUDS



71968 ROCKY BEACH

SILVIA VASSILEVA



71759 EMERALD LAGOON LIGHT CROP

DANHUI NAI



72635 RIVER AT DAWN

PAMELA MUNGER



71697 CLOUDS OVER LAGOON

SUE SCHLABACH



74877 PEACE AND QUIET

DANHUI NAI



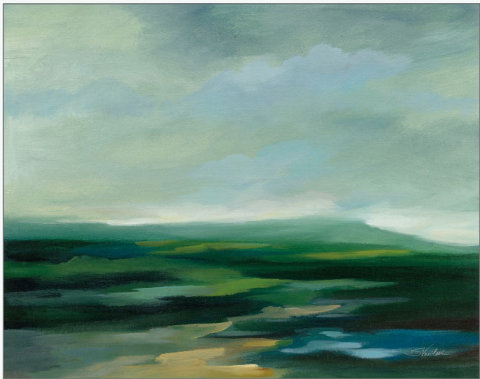
72638 WESTERN LAKE

DANHUI NAI



73238 HIGH SUMMER FIELD

SILVIA VASSILEVA



74316 IRELAND REMINISCENCE

SILVIA VASSILEVA



73900 ROMANTIC FOREST

SUE SCHLABACH



74876 JULY MEADOW



A: 72200 GEODE I | B: 72201 GEODE II
BETH GROVE

MERCEDES LOPEZ CHARRO



71325 PASSPORT TO THE WORLD BLUE



**mercedes
lopez charro**

Mercedes Lopez Charro lives on the beautiful Mediterranean coast of Spain where palm trees grow, vintage cars are seen daily on the school run and the streets are dotted with high-end boutiques. Sketching and doodling for as long as she can remember, her doodles have now become refined illustrations, sold as prints around the world. Trained as a graphic designer, Mercedes uses watercolor and pen and ink to create her colorful illustrations. When she is not drawing or painting, she can be found enjoying life with her English husband, and son Ollie.

SEE MORE ART



ART DECOR

LAURA HORN



74574 INDIGO BLISS II



74573 INDIGO BLISS I

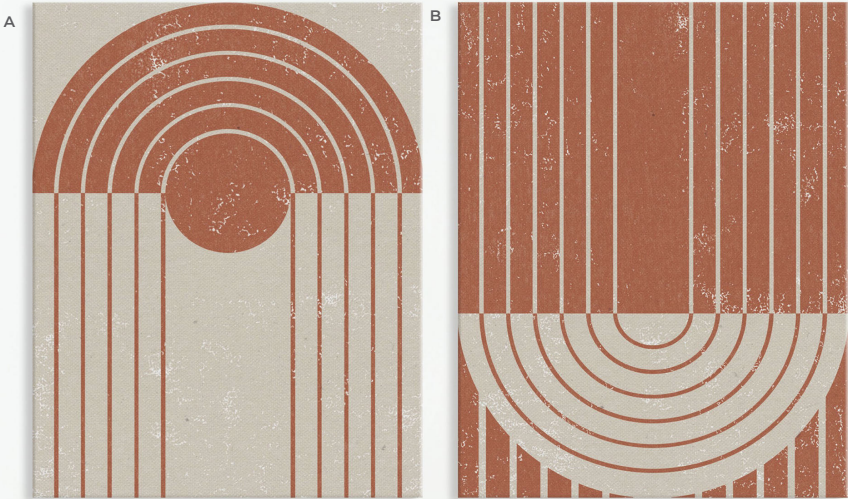
A: 72810 GATE I
B: 72811 GATE II
MOIRA HERSHEY



**moira
hershey**

After graduating from Savannah College of Art and Design with a BFA in Illustration in 2011, Moira Hershey relocated to Vermont to work as a designer and art director at Wild Apple. Her personal style is quirky, cute and fun, with an emphasis on bold lines and texture using gouache, ink, and digital media. She is inspired by nature, Scandinavian design, texture and color.

SEE MORE ART





800 756 8359 (TOLL FREE IN THE US)

802 457 3003 (INTERNATIONAL)

SALES@WILDAPPLE.COM | WWW.WILDAPPLE.COM

2513 WEST WOODSTOCK ROAD, WOODSTOCK, VERMONT 05091



PROUD MEMBER OF

ART  COPYRIGHT  COALITION
PROTECTING ART *and* CREATIVITY